

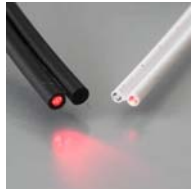
MCE300T

Optical Media Converter – Fast Ethernet

Polymer Optical Fiber (POF) to RJ45



MCE300T – 150 for POF cable 1,5 mm
MCE300T – 220 for POF cable 2,2 mm



Optical Link



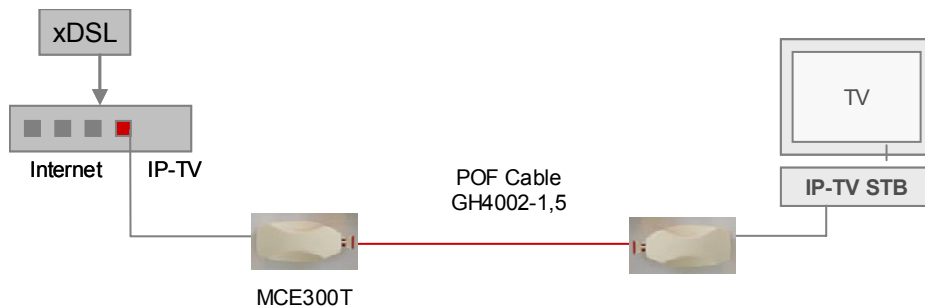
Installation Kit

Performance:

- easy installation with slim POF cable
- robust, reliable & radiation free
- visible light for Optical Function Control

Applications:

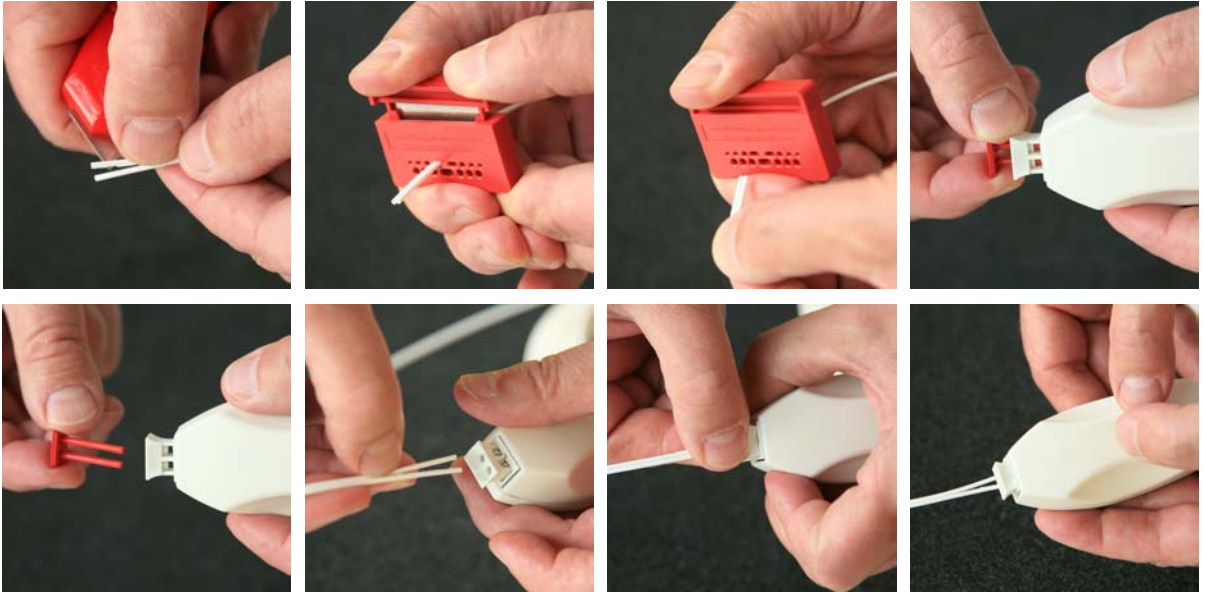
- IP – TV, Multimedia & Home Networking
- Media Center and Audio-Video Streaming
- for Local Area Networks & Office



With ESKAMEGA™ applicable for 100 Mbps up to 70m

With the POF media converter you can easily install a stable, radiation free and robust Ethernet data link or home network. From an electrician the POF cable can be easily passed into the existing electrical duct system for main power of your home or small office, no stemming, no drilling. For the do it yourself installation outside the wall the slim POF cable can be hidden easily behind door frames or the base board or under the carpet. Since the data transfer is using red visible light (650nm) the connection can be easily approved

POF Cable can be terminated with a simple tool and directly connected to the optical interface.



Technical Data	MCE300T
Transmission Speed	100 Mbps optical
Transmission length	50m with ESKA OPTOHOME™ RH 4002; 70m ESKAMEGA™ – MH4002 (Mitsubishi Rayon)
Power Supply	4,5 –6 V DC; external power supply
Electrical Data Socket	RJ 45
Optical Interfaces	Firecomms OPTOLOCK™ 1,5 or 2,2 mm cable; also available with SMI POF connector
Wavelength	650 nm typ.
Operating Temperature	-20 to +60°C
Function	Ethernet 10/100 BaseTx - 100 BaseFx Half / Full Duplex; Auto MDI-MDX
Mechanical Dimension	ca. 90 x 40 x 30 mm
Packages	- Link-Set with 2 MCE300T; 2 Cat.5e Patch cable; Cutting Tool and 30m POF cable. - Single Media Converter
Recommended POF cable	Step Index Fibre; Mitsubishi ESKAMEGA™ (NA 0,3) or ESKA OPTOHOME™ (NA 0,5)
Applications	Optimized for IP-TV and Multimedia; PC and Office Networking.

Easy Retrofitting



By an authorized expert POF cable can be installed easily into main power conduits in new buildings but also for retrofitting.